 Chef Works®

contemporary  
collection



 Chef Works®

# contemporary collection



06-09

APEX BANQUET COATS

06-09



10-15

BRIDGE VESTS

10-13

VOLANTE APRONS

14-15



Inspired by the beauty of music and architecture, the Contemporary Collection from Chef Works® modernizes hospitality apparel by bridging the divide between time-honored design and innovation. The inspired styles and dynamic designs were orchestrated with dedicated precision, while the line was curated with an emphasis on performance. Boasting rich fabrics and silhouettes, the Contemporary Collection forges an upmarket look that commands respect and admiration.



# 16-33

VERISMO SHIRTS	16-19
FORMEL SHIRTS	20-23
VOCE SHIRTS	24-25
SEERSUCKER SHIRTS	26-27
DECO SHIRTS	28-31
SPIRITOSO SHIRTS	32-33



# 34-51

LARGO APRONS	34-45
ADDITIONAL APRON STRAPS	46-47
BRIO APRONS	48-49
SIZING & FITS	50-51



C  
O  
N  
T  
E  
M  
P  
O  
R  
A  
R  
Y

U  
I

FROM LEFT TO RIGHT:

(ON HIM) SEERSUCKER SHIRT: SHC08-WHT | VOLANTE BISTRO APRON: AIN02-PNS (ON HIM) FORMEL SHIRT: SFB01-WHT | BRIDGE VEST: VNN02-PNS

(ON HER) SEERSUCKER SHIRT: SHC08W-WHT | BRIDGE VEST: VNN02W-PNS (ON HER) FORMEL SHIRT: SFB01W-WHT | VOLANTE V-NECK APRON: ABN04-PNS





# VILEY

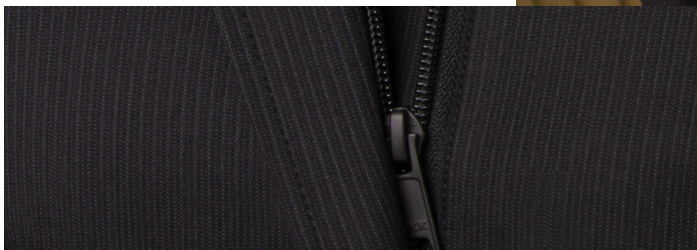
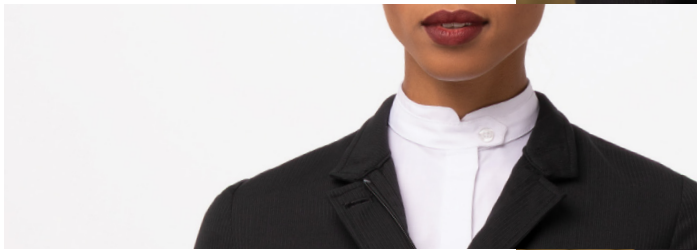
*THIS HYBRID COLLECTION WAS  
SKILLFULLY CRAFTED SO THAT EACH  
GARMENT COLLABORATES WITH THE  
OTHER TO CREATE AN ELEGANT  
& ELEVATED BRAND PROFILE.*



# Apex

## BANQUET COATS


### DETAILS



Buttressed up or buttressed down, the Apex Coat delivers a versatile look that can match whatever mood you're looking to set.





A promotional photograph for a clothing line. Two models, a woman on the left and a woman on the right, are standing in a futuristic, dimly lit environment with circular light fixtures on the wall. Both models are wearing dark, professional-looking blazers over white collared shirts. The woman on the left has her hair pulled back and is wearing red lipstick. The woman on the right has her hair in a ponytail. The overall aesthetic is sophisticated and modern.

*THE APEX COAT CHAMPIONS  
IN THE NEXT ERA OF  
FOOD & BEVERAGE  
APPAREL WITH UNRIVALED  
SOPHISTICATION*

FROM LEFT TO RIGHT: (ON HIM) APEX COAT: CQZ01-BBK | FORMEL SHIRT: SFB01-WHT (ON HER) APEX COAT: CQZ01W-BBK | FORMEL SHIRT: SFB01W-WHT  
(ON HER) APEX COAT: CQZ01W-BBK | FORMEL SHIRT: SFB01W-WHT



# Apex

/a-pex/

## BANQUET COAT

WOMEN'S | CQZ01W-BBK

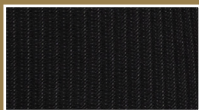
SIZES: XS-3XL **MF**

### DETAILS

- 6.2 oz. 70/30 poly/rayon
- Long sleeves
- Zip/button front with concealed placket
- Women's style closes right to left
- Front coat lining
- Banded/notched collar with button tab
- Inset hip pockets
- Inner left chest pocket
- Two back vent openings



*CLEAN LINES &  
CRISP FEATURES*



BLACK PINSTRIPE

CQZ01W-BBK

APEX COAT: CQZ01W-BBK | FORMEL SHIRT: SFB01W-WHT





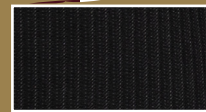
## BANQUET COAT

MEN'S | CQZ01-BBK

SIZES: S-4XL MF

### DETAILS

- 6.2 oz. 70/30 poly/rayon
- Long sleeves
- Zip/button front with concealed placket
- Men's style closes left to right
- Front coat lining
- Banded/notched collar with button tab
- Inset hip pockets
- Inner left chest pocket
- Two back vent openings



BLACK PINSTRIPE

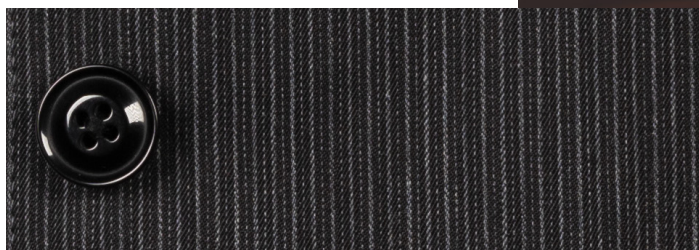
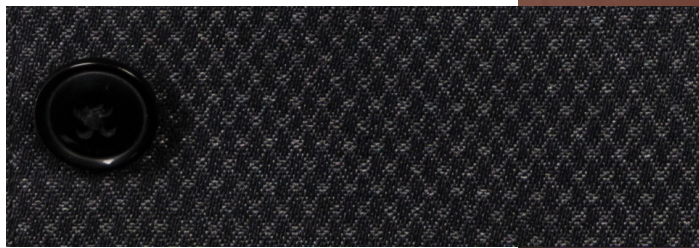
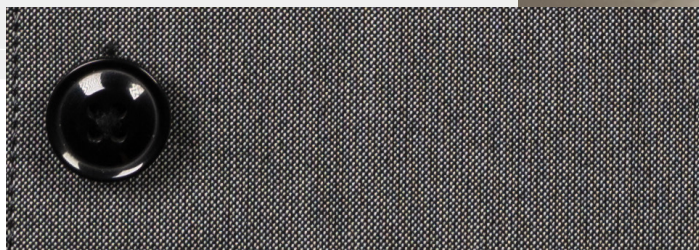
CQZ01-BBK



# Bridge

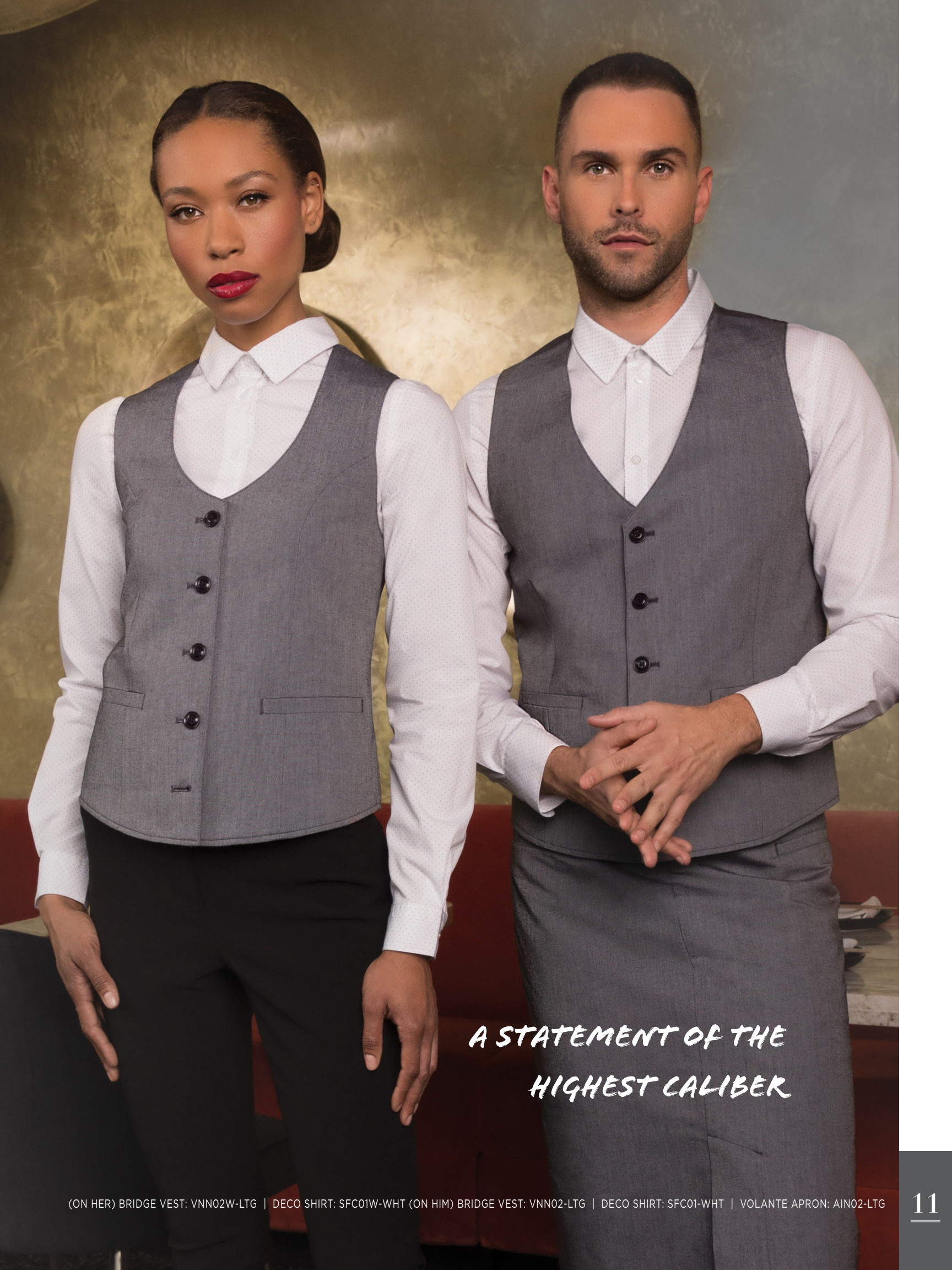
VESTS

## DETAILS



Available in three sleek fabrics  
— light gray, gray diamond  
and pinstripe.





*A STATEMENT OF THE  
HIGHEST CALIBER*

(ON HER) BRIDGE VEST: VNN02W-LTG | DECO SHIRT: SFC01W-WHT (ON HIM) BRIDGE VEST: VNN02-LTG | DECO SHIRT: SFC01-WHT | VOLANTE APRON: AIN02-LTG



# Bridge

/brij/

## VESTS

MEN'S | VNN02

SIZES: S-4XL **FF**

WOMEN'S | VNN02W

SIZES: XS-3XL **FF**

Merge sophistication with structure. This comfortable vest is elegant in its construction and flattering in its design.



(ON HIM) BRIDGE VEST: VNN02-PNS | FORMEL SHIRT: SFB01-WHT (ON HER) BRIDGE VEST: VNN02W-LTG | FORMEL SHIRT: SFB01W-WHT



## MEN'S BRIDGE



**GRAY DIAMOND**

VNN02-DIA



**LIGHT GRAY**

VNN02-LTG

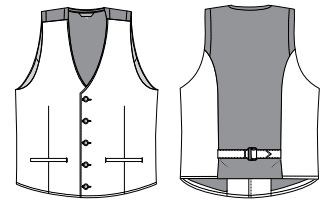


**PINSTRIPLE**

VNN02-PNS

### DETAILS

- Gray Diamond  
6.1 oz. 65/35 poly/cotton
- Light Gray  
6.2 oz. 65/35 poly/cotton
- Pinstripe  
5.9 oz. 65/35 poly/cotton
- V-neck
- Button front
- Stretch back panel
- Inner left pocket
- Front welt pockets
- Adjustable tie at back



**STRETCH BACK PANEL MAXIMIZES  
COMFORT & PERFORMANCE**

## WOMEN'S BRIDGE



**GRAY DIAMOND**

VNN02W-DIA



**LIGHT GRAY**

VNN02W-LTG

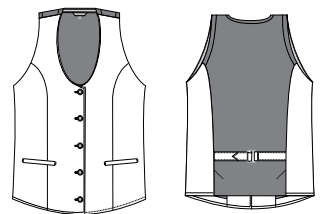


**PINSTRIPLE**

VNN02W-PNS

### DETAILS

- Gray Diamond  
6.1 oz. 65/35 poly/cotton
- Light Gray  
6.2 oz. 65/35 poly/cotton
- Pinstripe  
5.9 oz. 65/35 poly/cotton
- V-neck
- Button front
- Stretch back panel
- Inner left pocket
- Front welt pockets
- Adjustable tie at back





# Volante

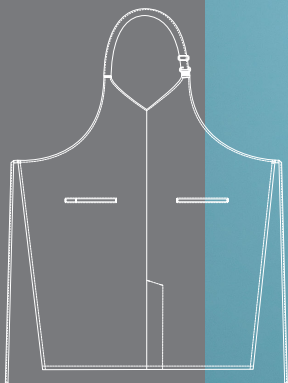
/vol-an-te/

## V-NECK BIB APRON

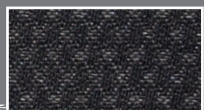
ABN04 | SIZE: 40" L x 40" W

### DETAILS

- Gray Diamond  
6.1 oz. 65/35 poly/cotton
- Light Gray  
6.2 oz. 65/35 poly/cotton
- Pinstripe  
5.9 oz. 65/35 poly/cotton
- 100% polyester liner
- Adjustable neck buckle
- Two inset hip pockets
- Front slit
- Reinforced stress points



*STATELY COMPOSITION,  
SMART LINES &  
UPMARKET FABRIC*



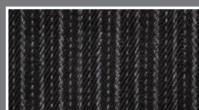
GRAY DIAMOND

ABN04-DIA



LIGHT GRAY

ABN04-LTG



PINSTRIP

ABN04-PNS

VOLANTE APRON: ABN04-DIA | SEERSUCKER SHIRT: SHC08-WHT



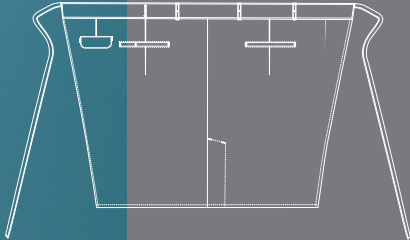


## BISTRO APRON

AIN02 | SIZE: 31.5" L x 40" W

### DETAILS

- Gray Diamond  
6.1 oz. 65/35 poly/cotton
- Light Gray  
6.2 oz. 65/35 poly/cotton
- Pinstripe  
5.9 oz. 65/35 poly/cotton
- 100% polyester liner
- Two inset hip pockets
- Right inset with pencil divide
- Back pocket with flap
- Front slit
- Reinforced stress points



GRAY DIAMOND  
AIN02-DIA



LIGHT GRAY  
AIN02-LTG



PINSTRIP  
AIN02-PNS



V  
E  
R  
T  
I  
C  
A  
L  
S  
T  
R  
I  
P  
E



VERISMO SHIRT: SFB02W-NAT | LARGO HALF BISTRO APRON: AHN05-MSH



COMPOSED. ELEGANT. HIGH-MINDED.  
MAXIMUM COMFORT,  
FUNCTIONALITY & STYLE

# WELLNESS ISMIO



# Verismo

/ver-ease-mo/

## SHIRT

MEN'S | SFB02  
SIZES: S-4XL **CF**

WOMEN'S | SFB02W  
SIZES: XS-3XL **CF**

Artful craftsmanship and inspired details give the Verismo shirt a balanced and clean look.



VERISMO SHIRT: SFB02W-BLK | LARGO HALF BISTRO APRON: AHN05-CHR



## MEN'S VERISMO



### BLACK

SFB02-BLK



### BLUE

SFB02-BLU



### NATURAL

SFB02-NAT

### DETAILS

- 2.6 oz. 62/38 cotton/poly
- Thin-stripe fabric
- Long sleeves with adjustable cuffs
- Converts from long to short sleeves with button tabs
- Banded collar
- Button front
- Back-collar apron holder
- Back yoke with pleats



## WOMEN'S VERISMO



### BLACK

SFB02W-BLK



### BLUE

SFB02W-BLU

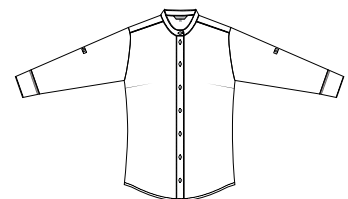


### NATURAL

SFB02W-NAT

### DETAILS

- 2.6 oz. 62/38 cotton/poly
- Thin-stripe fabric
- Long sleeves with adjustable cuffs
- Converts from long to short sleeves with button tabs
- Banded collar
- Button front
- Back-collar apron holder
- Front darts



*LIGHT & LUXURIOUS,  
DURABLE & DEPENDABLE*



B  
A  
N  
D  
E  
D  
C  
O  
L  
L  
A  
R

FO





*SMOOTH & REFINED,  
THE FORMEL SHIRT OFFERS STRUCTURED  
LINES & A TAILORED APPEARANCE*

# OR FORMEL



# Formel

/four-mel/

## SHIRT

### MEN'S FORMEL

SFB01 | SIZES: S-4XL **MF**

- 3.8 oz. 64/34/2 poly/cotton/elastane
- Long sleeves
- Banded collar w/button closure tab
- Adjustable button cuffs
- Concealed button placket
- Back yoke



BLACK  
SFB01-BLK



WHITE  
SFB01-WHT

### WOMEN'S FORMEL

SFB01W | SIZES: XS-3XL **MF**

- 3.8 oz. 64/34/2 poly/cotton/elastane
- Long sleeves
- Banded collar w/button closure tab
- Adjustable button cuffs
- Concealed button placket
- Princess seams on front and back




BLACK  
SFB01W-BLK



WHITE  
SFB01W-WHT





The Formel Shirt can be the centerpiece of any apparel program, or serve as a complement when paired with an upmarket apron or banquet coat.

*FUSING STYLE &  
SOPHISTICATION TO CREATE  
A MODERN EXPERIENCE*

(ON HER) FORMEL SHIRT: SFB01W-BLK (ON HIM) FORMEL SHIRT: SFB01-BLK




# Voce

/voh-'chay/

## SHIRT

MEN'S | SFB03

SIZES: S-4XL 

WOMEN'S | SFB03W

SIZES: XS-3XL 

Subtle stripes  
send a message  
without making  
a sound.



(ON HIM) VOCE SHIRT: SFB03-TAU (ON HER) VOCE SHIRT: SFB03W-TAU



## MEN'S VOCE



BLUE

SFB03-BLU



GRAY

SFB03-GRY

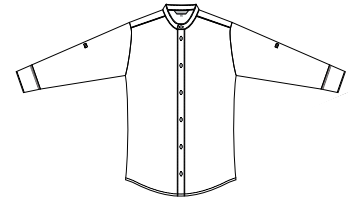


TAUPE

SFB03-TAU

### DETAILS

- 3.1 oz. 60/40 cotton/poly
- Wide-stripe fabric
- Long sleeves with adjustable cuffs
- Converts from long to short sleeves with button tabs
- Banded collar
- Button front
- Back yoke with pleats
- Back-collar apron holder



**FEATURING A BANDED COLLAR &  
BACK-COLLAR APRON HOLDER**

## WOMEN'S VOCE



BLUE

SFB03W-BLU



GRAY

SFB03W-GRY



TAUPE

SFB03W-TAU

### DETAILS

- 3.1 oz. 60/40 cotton/poly
- Wide-stripe fabric
- Long sleeves with adjustable cuffs
- Converts from long to short sleeves with button tabs
- Banded collar
- Button front
- Back yoke with darts
- Front darts
- Back-collar apron holder





# Seersucker

/sear-sucker/

## SHIRT

MEN'S | SHC08

SIZES: S-4XL **CF**

WOMEN'S | SHC08W

SIZES: XS-3XL **CF**

Go beyond the  
plain white shirt.



SEERSUCKER SHIRT: SHC08-WHT



## MEN'S SEERSUCKER



BLACK

SHC08-BLK



CHARCOAL

SHC08-CHR

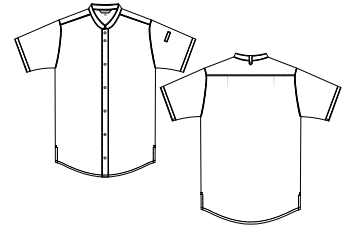


WHITE

SHC08-WHT

### DETAILS

- 4 oz. 65/35 poly/cotton
- Short sleeves
- Left sleeve inset pocket
- Banded collar
- Snap front
- Back yoke with darts
- Side-seam slits
- Back-collar apron holder



*THE MANDARIN COLLAR OFFERS A MODERN  
PRESENTATION WITH NEXT-LEVEL CLASS*

## WOMEN'S SEERSUCKER



BLACK

SHC08W-BLK



CHARCOAL

SHC08W-CHR

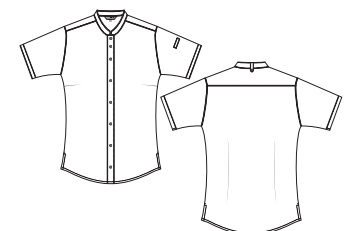


WHITE

SHC08W-WHT

### DETAILS

- 4 oz. 65/35 poly/cotton
- Short sleeves
- Left sleeve inset pocket
- Banded collar
- Snap front
- Back yoke with darts
- Side-seam slits
- Back collar apron holder





D  
O  
D  
E  
T  
H  
O  
O  
D  
P  
R  
I  
N  
T

D

DECO SHIRT: SFC01-NAV | BRIDGE VEST: VNN02-LTG



# TECO

A LOOK THAT IS DISTINCTLY  
**CONTEMPORARY**

Valet



# Deco

/deh-ko/

## SHIRT

MEN'S | SFC01

SIZES: S-4XL 

WOMEN'S | SFC01W

SIZES: XS-3XL 

A crisp, smart  
solution for all  
hospitality needs.



DECO SHIRT: SFC01-NAV



## MEN'S DECO



BLACK  
SFC01-BLK



NAVY  
SFC01-NAV



WHITE  
SFC01-WHT

### DETAILS

- 3.4 oz. 65/35 poly/cotton
- Dot print
- Long sleeves
- Adjustable button cuffs
- Front and back darts



*DOT PRINT DETAIL OFFERS A SUBTLE  
LAYER OF SOPHISTICATION*

## WOMEN'S DECO



BLACK  
SFC01W-BLK



NAVY  
SFC01W-NAV



WHITE  
SFC01W-WHT

### DETAILS

- 3.4 oz. 65/35 poly/cotton
- Dot print
- Long sleeves
- Adjustable button cuffs
- Front and back darts





# Spiritoso

/spear-ih-toso/

## SHIRT

WOMEN'S | SFC02W

SIZES: XS-3XL MF

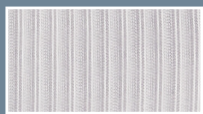
## DETAILS

- 3.9 oz. 82/18 poly/cotton
- Long sleeves with adjustable cuffs
- Striped knit
- Button front
- Back yoke
- Back darts



BLUE

SFC02W-BLU



GRAY

SFC02W-GRY

SPIRITOSO SHIRT: SFC02W-GRY





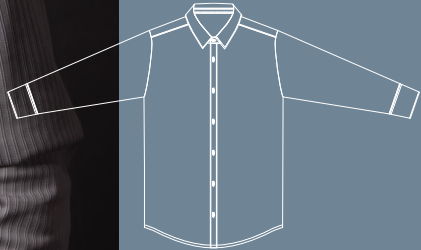
**SHIRT**

MEN'S | SFC02

SIZES: S-4XL **MF**

**DETAILS**

- 3.9 oz. 82/18 poly/cotton
- Long sleeves with adjustable cuffs
- Striped knit
- Button front
- Back yoke
- Back darts



**BUILT FOR PROFESSIONALS  
WHO CRAVE AN ADDED  
LEVEL OF COMFORT**



**BLUE**

SFC02-BLU



**GRAY**

SFC02-GRY



A  
P  
R  
O  
N  
S

LA

LARGO SHORT BIB APRON: ABN01W-CHR | VERISMO SHIRT: SFB02W-BLK



*MODERN DETAILS.  
CRISP LINES.  
VERSATILE FEATURES.*

*IT'S NOT AN APRON.  
IT'S AN EXPERIENCE.*

# AR GO



# Largo

/lawr-go/

## BIB APRON

ABN01-MSH | SIZE: 30.5"L x 38"W

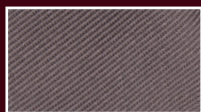
## SHORT BIB APRON

ABN01W-MSH | SIZE: 25"L x 38"W

## HALF BISTRO APRON

AHN05-MSH | SIZE: 16"L x 38"W

*CROSS-BACK TAKES THE  
STRAIN OFF OF THE NECK  
AND ELEVATES THE LARGO  
INTO A CLASS OF ITS OWN.*



MUSHROOM

LARGO SHORT BIB APRON: ABN01W-MSH | SEERSUCKER SHIRT: SHC08W-BLK

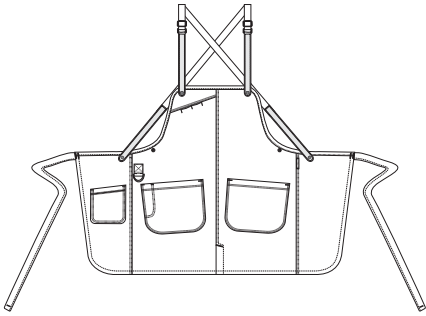


## LARGO BIB APRON

ABN01-MSH

### DETAILS

- 6.2 oz. 65/35 poly/cotton
- Adjustable/removable apron straps
- Includes (2) apron straps
- Curved hems
- Concealed pen pockets on chest
- Slit seam and belt loops for ties
- Two roomy hip pockets, one with pencil divide
- Back pocket
- Utility D-ring
- Front slit
- 30.5 inches long, 38 inches wide

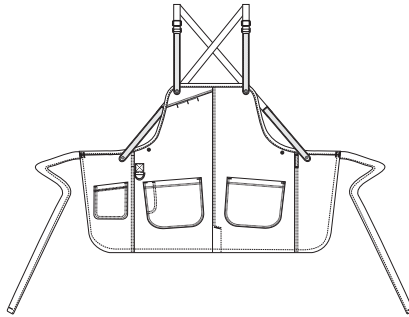


## LARGO SHORT BIB APRON

ABN01W-MSH

### DETAILS

- 6.2 oz. 65/35 poly/cotton
- Adjustable/removable apron straps
- Includes (2) apron straps
- Curved hems
- Concealed pen pockets on chest
- Slit seam and belt loops for ties
- Two roomy hip pockets, one with pencil divide
- Back pocket
- Utility D-ring
- 25 inches long, 38 inches wide



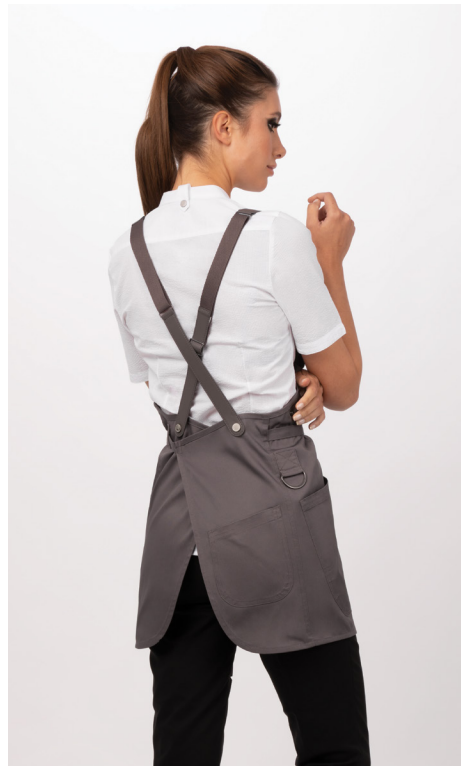
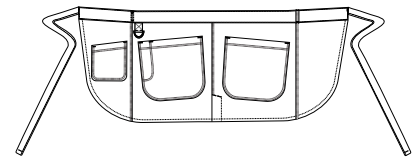
## LARGO HALF BISTRO APRON

AHN05-MSH

### DETAILS

- 6.2 oz. 65/35 poly/cotton
- Waistband tie opening and belt loop
- Back utility pocket
- Two front hip patch pockets
- Utility D-ring
- 16 inches long, 38 inches wide

**ALL THREE STYLES  
AVAILABLE IN FIVE COLORS**





# Largo

/lawr-go/

## BIB APRON

ABN01-BLU | SIZE: 30.5"L x 38"W

## SHORT BIB APRON

ABN01W-BLU | SIZE: 25"L x 38"W

## HALF BISTRO APRON

AHN05-BLU | SIZE: 16"L x 38"W



BLUE

LARGO BIB APRON: ABN01-BLU | VERISMO SHIRT: SFB02-BLU



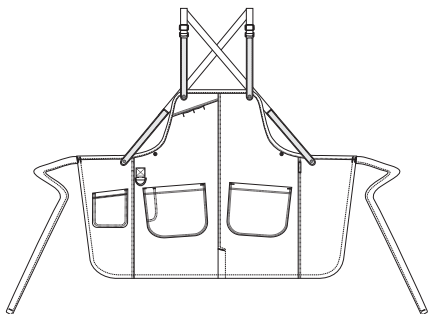
## LARGO BIB APRON

ABN01-BLU



### DETAILS

- 6.2 oz. 65/35 poly/cotton
- Adjustable/removable apron straps
- Includes (2) apron straps
- Curved hems
- Concealed pen pockets on chest
- Slit seam and belt loops for ties
- Two roomy hip pockets, one with pencil divide
- Back pocket
- Utility D-ring
- Front slit
- 30.5 inches long, 38 inches wide



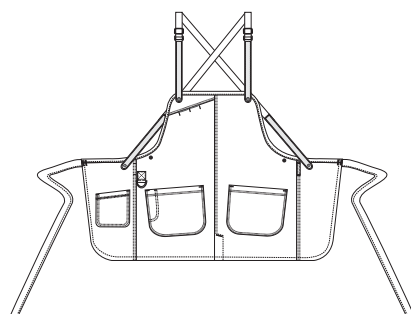
## LARGO SHORT BIB APRON

ABN01W-BLU



### DETAILS

- 6.2 oz. 65/35 poly/cotton
- Adjustable/removable apron straps
- Includes (2) apron straps
- Curved hems
- Concealed pen pockets on chest
- Slit seam and belt loops for ties
- Two roomy hip pockets, one with pencil divide
- Back pocket
- Utility D-ring
- 25 inches long, 38 inches wide



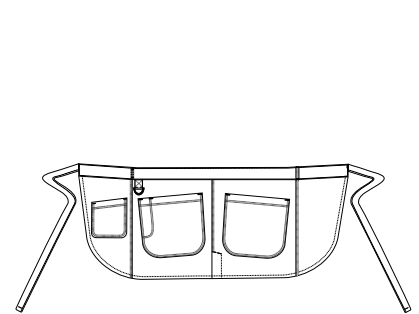
## LARGO HALF BISTRO APRON

AHN05-BLU



### DETAILS

- 6.2 oz. 65/35 poly/cotton
- Waistband tie opening and belt loop
- Back utility pocket
- Two front hip patch pockets
- Utility D-ring
- 16 inches long, 38 inches wide





# Largo

/lawr-go/

## BIB APRON

ABN01-BLK | SIZE: 30.5"L x 38"W

## SHORT BIB APRON

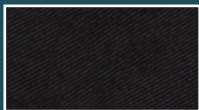
ABN01W-BLK | SIZE: 25"L x 38"W

## HALF BISTRO APRON

AHN05-BLK | SIZE: 16"L x 38"W



*POWERFUL & POISED*



BLACK

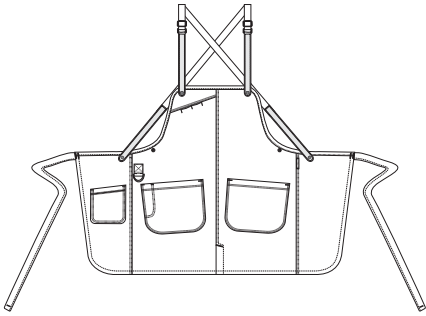


## LARGO BIB APRON

ABN01-BLK

### DETAILS

- 6.2 oz. 65/35 poly/cotton
- Adjustable/removable apron straps
- Includes (2) apron straps
- Curved hems
- Concealed pen pockets on chest
- Slit seam and belt loops for ties
- Two roomy hip pockets, one with pencil divide
- Back pocket
- Utility D-ring
- Front slit
- 30.5 inches long, 38 inches wide

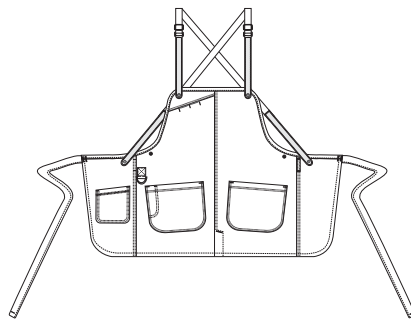


## LARGO SHORT BIB APRON

ABN01W-BLK

### DETAILS

- 6.2 oz. 65/35 poly/cotton
- Adjustable/removable apron straps
- Includes (2) apron straps
- Curved hems
- Concealed pen pockets on chest
- Slit seam and belt loops for ties
- Two roomy hip pockets, one with pencil divide
- Back pocket
- Utility D-ring
- 25 inches long, 38 inches wide

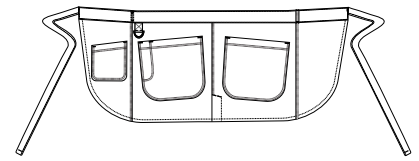


## LARGO HALF BISTRO APRON

AHN05-BLK

### DETAILS

- 6.2 oz. 65/35 poly/cotton
- Waistband tie opening and belt loop
- Back utility pocket
- Two front hip patch pockets
- Utility D-ring
- 16 inches long, 38 inches wide





# Largo

/lawr-go/

## BIB APRON

ABN01-CHR | SIZE: 30.5"L x 38"W

## SHORT BIB APRON

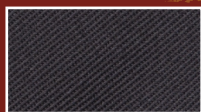
ABN01W-CHR | SIZE: 25"L x 38"W

## HALF BISTRO APRON

AHN05-CHR | SIZE: 16"L x 38"W



*MOVE WITH  
CALCULATED PRECISION*



CHARCOAL

LARGO SHORT BIB APRON: ABN01W-CHR | VERISMO SHIRT: SFB02W-BLK



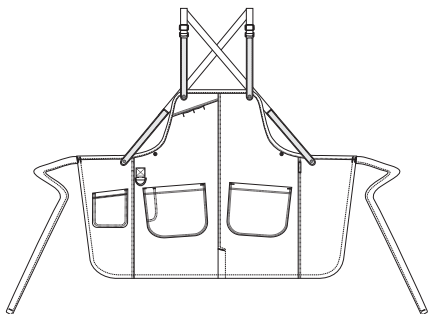
## LARGO BIB APRON

ABN01-CHR



### DETAILS

- 6.2 oz. 65/35 poly/cotton
- Adjustable/removable apron straps
- Includes (2) apron straps
- Curved hems
- Concealed pen pockets on chest
- Slit seam and belt loops for ties
- Two roomy hip pockets, one with pencil divide
- Back pocket
- Utility D-ring
- Front slit
- 30.5 inches long, 38 inches wide



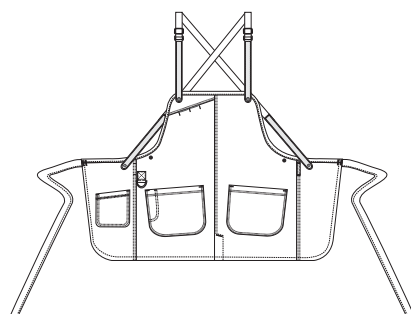
## LARGO SHORT BIB APRON

ABN01W-CHR



### DETAILS

- 6.2 oz. 65/35 poly/cotton
- Adjustable/removable apron straps
- Includes (2) apron straps
- Curved hems
- Concealed pen pockets on chest
- Slit seam and belt loops for ties
- Two roomy hip pockets, one with pencil divide
- Back pocket
- Utility D-ring
- 25 inches long, 38 inches wide



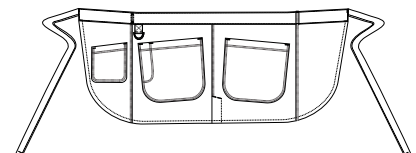
## LARGO HALF BISTRO APRON

AHN05-CHR



### DETAILS

- 6.2 oz. 65/35 poly/cotton
- Waistband tie opening and belt loop
- Back utility pocket
- Two front hip patch pockets
- Utility D-ring
- 16 inches long, 38 inches wide





# Largo

/lawr-go/

## BIB APRON

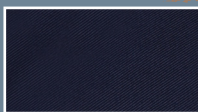
ABN01-DNA | SIZE: 30.5"L x 38"W

## SHORT BIB APRON

ABN01W-DNA | SIZE: 25"L x 38"W

## HALF BISTRO APRON

AHN05-DNA | SIZE: 16"L x 38"W



DARK NAVY

LARGO HALF BISTRO APRON: AHN05-DNA | VOCE SHIRT: SFB03W-BLU

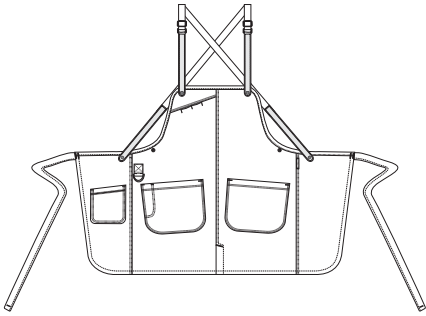


## LARGO BIB APRON

ABN01-DNA

### DETAILS

- 6.2 oz. 65/35 poly/cotton
- Adjustable/removable apron straps
- Includes (2) apron straps
- Curved hems
- Concealed pen pockets on chest
- Slit seam and belt loops for ties
- Two roomy hip pockets, one with pencil divide
- Back pocket
- Utility D-ring
- Front slit
- 30.5 inches long, 38 inches wide

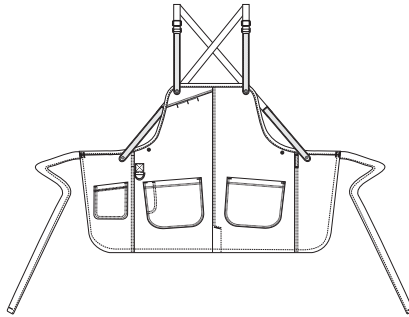


## LARGO SHORT BIB APRON

ABN01W-DNA

### DETAILS

- 6.2 oz. 65/35 poly/cotton
- Adjustable/removable apron straps
- Includes (2) apron straps
- Curved hems
- Concealed pen pockets on chest
- Slit seam and belt loops for ties
- Two roomy hip pockets, one with pencil divide
- Back pocket
- Utility D-ring
- 25 inches long, 38 inches wide

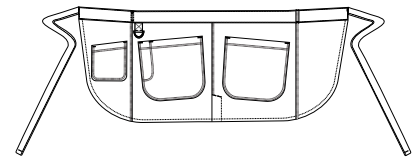


## LARGO HALF BISTRO APRON

AHN05-DNA

### DETAILS

- 6.2 oz. 65/35 poly/cotton
- Waistband tie opening and belt loop
- Back utility pocket
- Two front hip patch pockets
- Utility D-ring
- 16 inches long, 38 inches wide





# Largo

/lawr-go/

## ADDITIONAL APRON STRAPS

XNS05 | 34" L

### DETAILS

- Textile: 100% polyester, Non-textile: polyurethane
- Adjustable metal slider
- Snap closure
- One snap branded with Chef Works® logo



*MIX. MATCH. MAGNIFICENT.*



- 1. WEAR IT CROSS-BACK** (REQUIRES 2 STRAPS)
- 2. THROW IT OVER THE NECK** (REQUIRES 1 STRAP)
- 3. PULL IT UP OVER THE SHOULDERS** (REQUIRES 2 STRAPS)







*POPS OF COLOR  
COMMAND ATTENTION*

(ON HIM) (2) APRON STRAPS: XNS05-WHT | LARGO BIB APRON: ABN01-CHR | DECO SHIRT: SFC01-BLK  
(ON HER) (2) APRON STRAPS: XNS05-TUR | LARGO SHORT BIB APRON: ABN01W-CHR | DECO SHIRT: SFC01W-BLK



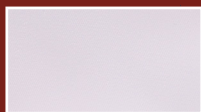
# Brio

/bree-oh/

CHEF'S BIB APRON

ACN01 | SIZE: 40"L x 43"W

*AN ELASTIC NECK STRAP  
OFFERS NEXT-LEVEL  
COMFORT*



WHITE

ACN01-WHT

BRIO APRON: ACN01-WHT | SEERSUCKER SHIRT: SHC08-CHR



## BRIO CHEF'S BIB APRON



**BLACK**

ACN01-BLK



**BLUE**

ACN01-BLU



**MUSHROOM**

ACN01-MSH



**CHARCOAL**

ACN01-CHR

### DETAILS

- 4.7 oz. 65/35 poly/cotton
- 'Lite' twill fabric
- Adjustable elastic neck strap
- Concealed pen pockets on chest
- Curved hem
- Utility D-ring
- Hip pocket
- Front slit
- Reinforced stress points
- 40 inches long, 43 inches wide



**TYPICALLY RESERVED FOR CHEF COATS,  
OUR SIGNATURE 'LITE' FABRIC OFFERS  
FEATHERWEIGHT COVERAGE**





# Sizing & Fits



*THE PERFECT FIT NEVER  
SOUNDED SO GOOD.*



## MEN'S FITS

<b><u>MF</u></b>	<u>Modern Fit</u>	Tailored fit, cut slim through the chest and body.
<b><u>CF</u></b>	<u>Classic Fit</u>	Broadly cut across the shoulders, cut wide through the chest and body, loose-fitting sleeves.
<b><u>FF</u></b>	<u>Form Fit</u>	A polished fit with stretch fabrics that silhouette the body.

<b>Chest (in)</b>	32/34	36/38	40/42	44/46	48/50	52/54	56/58	60/62	64/66	68/70	72/74
<b>Size</b>	XS	S	M	L	XL	2XL	3XL	4XL	5XL	6XL	7XL
<b>Chest (cm)</b>	81/86	91/97	102/107	112/117	122/127	132/137	142/147	152/157	163/168	173/178	183/188

## WOMEN'S FITS

<b><u>MF</u></b>	<u>Modern Fit</u>	Tailored for a feminine fit with a slightly relaxed silhouette.
<b><u>CF</u></b>	<u>Classic Fit</u>	Easy fit skims the body with an updated drape for a professional, pulled-together look.
<b><u>FF</u></b>	<u>Form Fit</u>	A polished fit with stretch fabrics that fit snugly to the curve of the body.

<b>Chest (in)</b>	30/32	34/36	38/40	42/44	46/48	50/52	54/56	58/60	62/64
<b>Size</b>	XS	S	M	L	XL	2XL	3XL	4XL	5XL
<b>Chest (cm)</b>	76/81	86/91	97/102	107/112	117/122	127/132	137/142	147/152	157/163

## SPECIAL THANKS

Animae, San Diego, CA.



FROM LEFT TO RIGHT:

(ON HIM) SEERSUCKER SHIRT: SHC08-WHT | VOLANTE BISTRO APRON: AIN02-PNS

(ON HIM) FORMEL SHIRT: SFB01-WHT | BRIDGE VEST: VNN02-PNS

(ON HER) SEERSUCKER SHIRT: SHC08W-WHT | BRIDGE VEST: VNN02W-PNS

(ON HER) FORMEL SHIRT: SFB01W-WHT | VOLANTE V-NECK APRON: ABN04-PNS

CAT-C20-0

